



GALERIE HENZE & KETTERER AG
Kirchstrasse 26 - CH 3114 Wichtrach/Bern
Tel. +41/31/781 06 01 - Fax: +41/31/781 07 22
www.henze-ketterer.ch - m.triebold@henze-ketterer.com

GALERIE HENZE & KETTERER & TRIEBOLD
Wettsteinstrasse 4 - CH 4125 Riehen/Basel
Tel: +41/61/641 77 77 - Fax: +41/61/641 77 78
www.henze-ketterer.ch - ghkt@artgalleries.ch

Wichtrach / Riehen, February 2019

Dear Sir or Madam,

From March 16th to March 24th 2019 we take part in **TEFAF Maastricht 2019**.

We would like to invite you to visit us at TEFAF Maastricht 2019 from Saturday, March 16th to Saturday, March 23th between 11 a.m. and 7 p.m. and Sunday, March 24th, from 11 a.m. to 6 p.m.

Please avail yourself of the opportunity of exploring the wide variety and exclusive offer at the numerous booths. 7,000 years of art history are expecting you.

At our **booth 444** we are going to show this year paintings, sculpture and works on paper by the following artists:

with a focus on the theme „**First World War**“

Erich Heckel
Ernst Ludwig Kirchner

As well as works of art by **other artists**

George Grosz
Lyonel Feininger
August Macke
Edvard Munch
Emil Nolde
Christian Rohlf
Géza Vastagh
Fritz Winter

sculpture

Karl Hartung

You may find further information about opening hours and travel possibilities on the attached documents and at: www.tefaf.com.

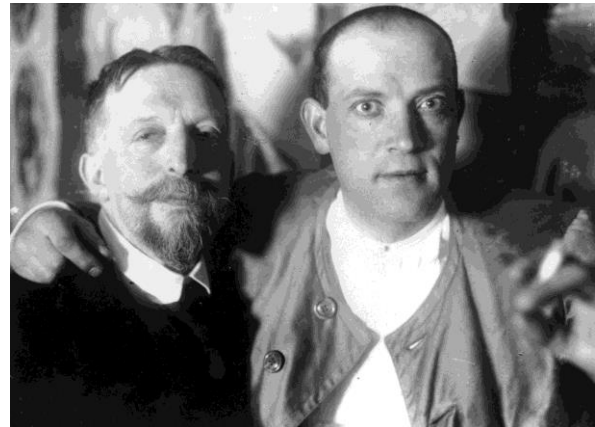
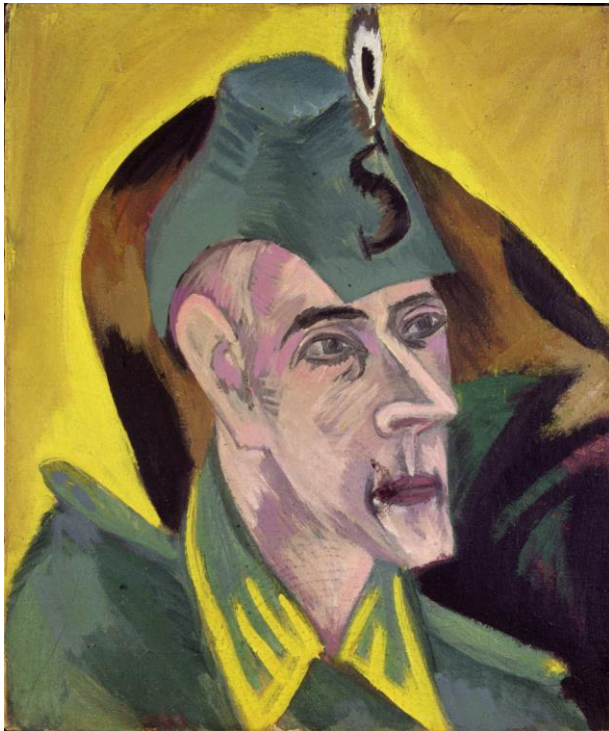
During the fair you may reach us by phone: +41 79 508 69 61
or by email: m.triebold@henze-ketterer.com.

Further information about the activities of our gallery is at your disposal always updated under www.henze-ketterer.ch.

With our best wishes and warmest regards,
Yours

Galerie Henze & Ketterer (& Triebold)

Galerie Henze & Ketterer & Triebold Riehen/ Basel
Galerie Henze & Ketterer AG Wichtrach/ Bern
Kunst von der klassischen Moderne bis in die Gegenwart
Galerie - Kunsthandlung - Kunstbuchhandlung - Verlag - Archive
Ausstellungen - Ankauf - Verkauf - Kommission - Schätzung
Beratung bezüglich Dokumentation Echtheit Konservierung Versicherung Transport
Konzeptionelle und organisatorische Betreuung von Kunstausstellungen und Kunstsammlungen
Dienstag-Freitag 10 - 12 + 14 - 18 Uhr - Samstag 10 - 16 Uhr



Left: Ernst Ludwig Kirchner, «Portrait Hugo», Oil on canvas, 1914. Gordon 415.
 With the estate-stamp on the verso. 60 x 50 cm.

Right: Ernst Ludwig Kirchner, Botho Graef (l.) and Hugo Biallowons (r.) in Kirchner's studio, Photography circa 1914.

The head-and-shoulders portrait is that of Hugo Biallowons (1879 Sensburg – Verdun 1916), forest supervisor and life companion of Botho Graef, Professor of Archeology and Art History in Jena. Here in our painting 'Hugo', also a close friend of Kirchner's, since 1914, is already portrayed in the uniform that was to be his fate.

Hugo Biallowons models for Kirchner on various occasions as for the paintings "Tanz zwischen zwei Frauen" (Dance between the women) (see Gordon 443). When Hugo was killed at Verdun in 1916, Kirchner was devastated. Botho Graef (1857 Berlin – Königstein 1917) died of a broken heart only a few months after Hugo's death in action. Kirchner had lost one of the few pillars of stability in the maelstrom of the Second World War. This loss was also a reason for Kirchner's nervous breakdown shortly afterwards that lead him into several hospitals and finally to Switzerland.

In this so sad and wearing period, Kirchner created some of his most remarkable and important paintings in spite of his existential fear.

This year's fair appearance at the TEFAF Maastricht 2019 is completely under the sign and theme of the **First World War**. In addition to works never seen before in oil and on paper by **Ernst Ludwig Kirchner**, you can also see other works by the **artist's group "Brücke"**, especially by **Erich Heckel** and **Emil Nolde**, at our stand 444. With **August Macke** another well-known expressionist will complement our presentation. Furthermore, paintings, drawings and prints by **George Grosz**, **Lyonel Feininger** and **Edvard Munch** can be seen, among others. All this will be complemented by sculptures, especially bronzes by **Karl Hartung**.

Profile of the galleries

Since 1993 in Wichtrach, formerly since 1946 in Stuttgart, 1962 and 1970 in Campione d' Italia on Lake Lugano. Managing Directors: Ingeborg Henze-Ketterer and Dr. Wolfgang Henze. Since 2001 also in Riehen/Basel under the direction of Dr. Alexandra Henze Triebold and Marc Triebold.

The gallery represents art from classical modern style to contemporary art, in particular expressionism, abstraction and new figuration. The gallery sees itself not merely as point of sale. Regular solo and group exhibitions, participations in international art fairs, but also the mediation and support of exhibitions in public institutions at both nationally and internationally are as much a part of the gallery's programme as the administration of archives about the represented artists.

Booth 444 – Selection of art works



Ernst Ludwig Kirchner «Unser Haus; Haus in Wiesen».
 Oil on canvas, 1920/1922.
 Gordon 631.
 Signed on the lower right.
 90 x 120 cm.



August Macke «Bildnis Walter Macke mit Rosenstrauss».
 Oil on canvas, 1913.
 Heiderich G 466.
 78 x 85 cm.



Ernst Ludwig Kirchner «Flussübergang der Reiter».
 Lithography on satined chamois paper, 1915.
 Dube L 301 I. 1 of 5 prints by the artist.
 26,8 x 21,4 on 35 x 32 cm.
 Signed on the lower right with pencil.



Fritz Winter «Ohne Titel».
 Wood relief, poker work, 1933.
 Monogrammed and dated on the lower right. 78 x 84 cm.



Erich Heckel «Krüppel am Meer».
 Lithography on ripped chamois handmade paper, 1916.
 Dube L 236 IV.
 Signed and dated on the lower right.
 26,2 x 21,5 on 51 x 35,2 cm.



Ernst Ludwig Kirchner «Offizier und Kellnerin».
 Oil on canvas, 1915. Gordon 431.
 With the estate-stamp on the verso.
 95 x 82 cm.